

# KANGAROO SERIES

**True Source  
of *Energy***

**MSE** 345-370 Watt





# Fully Automated & Largest Manufacturing Facility in Australia



## Our Approach

We believe high quality solar power should be produced locally at globally competitive pricing.



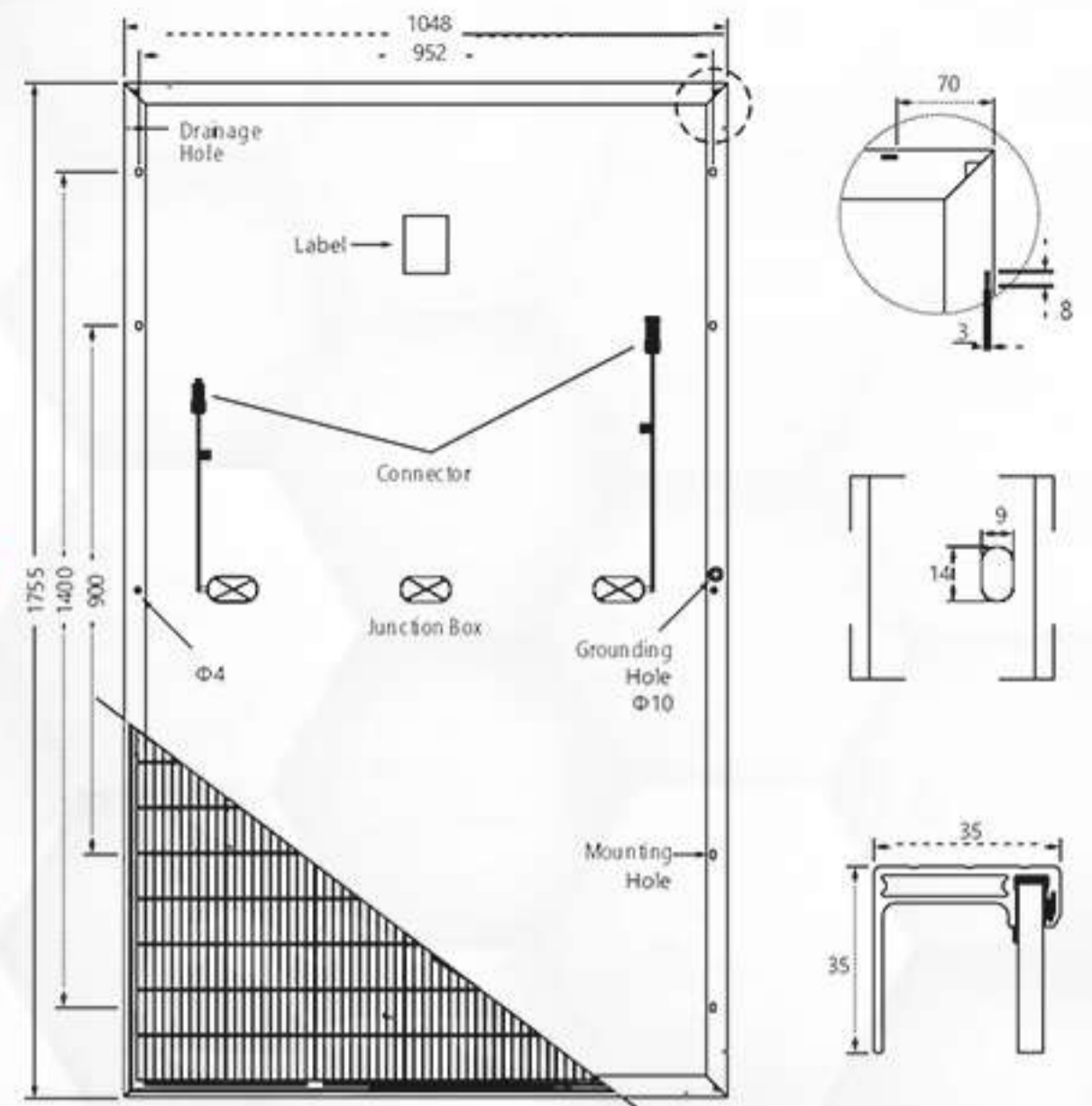
## Our Quality

- › 2400 pa wind & 5400 pa mechanical loads
- › High temperature operation
- › Easy module replacement
- › Quality control and traceability by stringent QMS system
- › State of ART fully automatic facility
- › Earth leakage tested to 3600V DC
- › Double Electro-Luminescence (EL) tested
- › Built to perform in low light condition
- › Module Pass fire class C performance per UL790



# Module Design

<b>Cells Type</b>	Mono 166x83mm
<b>Weight</b>	19kg
<b>Dimension</b>	1755x1048x35mm (LxWxT)
<b>Output Cables</b>	4.0 mm; Portrait: N 400mm/P 300mm, Cable length can be customized
<b>No. of Cells</b>	120 (6x20)
<b>Glass</b>	3.2 mm High Transmission, Antireflection Coating
<b>Junction box</b>	IP68, 3 Bypass Diodes
<b>Connector</b>	QC Solar (Suzhou) Corporation(QC4.10-cd) OR Sta ubli Electrical Connector AG ( PV -KST4 EVO2/xy _UR; PV-KBT4-EVO2/xy _UR)
<b>Packing</b>	31pcs/pallet, 372pcs/20GP, 858pcs/40HQ



AUSTRALIAN  
QUALITY THAT  
YOU CAN TRUST



Modules	MSE-345W-m60H		MSE-350W-m60H		MSE-355W-m60H		MSE-360W-m60H		MSE-365W-m60H		MSE-370W-m60H	
	STC	NOCT	STC	NOCT	STC	NOCT	STC	NOCT	STC	NOCT	STC	NOCT
Maximum Power(Pmax)	345W	260W	350W	266W	355W	268W	360W	270W	365W	274W	370W	278W
Open-Circuit Voltage(Voc)	41.25V	43.4V	41.4V	43.8V	41.6V	44.1V	41.8V	44.5V	42.0V	44.7V	42.2V	45.0V
Maximum Power Voltage(Vmp)	34.39V	33.0V	34.79V	33.3V	35.14V	36.0V	35.19V	36.3V	35.33V	36.6V	35.4V	36.9V
Short-circuit Current(ISC)	10.53A	7.70A	10.59A	7.76A	10.63A	7.81A	11.24A	7.86A	11.30A	7.92A	11.36A	7.98A
Maximum Power Current(Imp)	10.03A	7.27A	10.06A	7.31A	10.1 A	7.37A	10.23A	7.44A	10.33A	7.49A	10.45A	7.54A
Module Efficiency(%)	19.70%		20.01%		20.20%		20.36%		20.46%		20.76%	
Operating Temperature(°C)	-40 ~ +85°C											
Maximum System Voltage	1500VDC											
Maximum Series Fuse Rating	20A											
Power Sorting	0~+5W											
Power Rating	±5%/±2%/±2											
Pmax/Isc/Voc%												

**Noct** : Irradiance 800w/ M2, Cell Te Mpe Rature 20°C, Spectrum Am1.5, Wind Spe Ed 1m/s

**Stc** : Irradiance 1000w/m2, Cell Te Mpe Rature 25°C, Spectrum Am1.5





## Temperature Ratings

Nominal Operating CellTemp	45°C 2°C
Tempcoefficient of Pmax	-0.37%/°C
Tempcoefficient of Voc	-0.29%/°C
Tempcoefficient of Isc	0.05%/°C



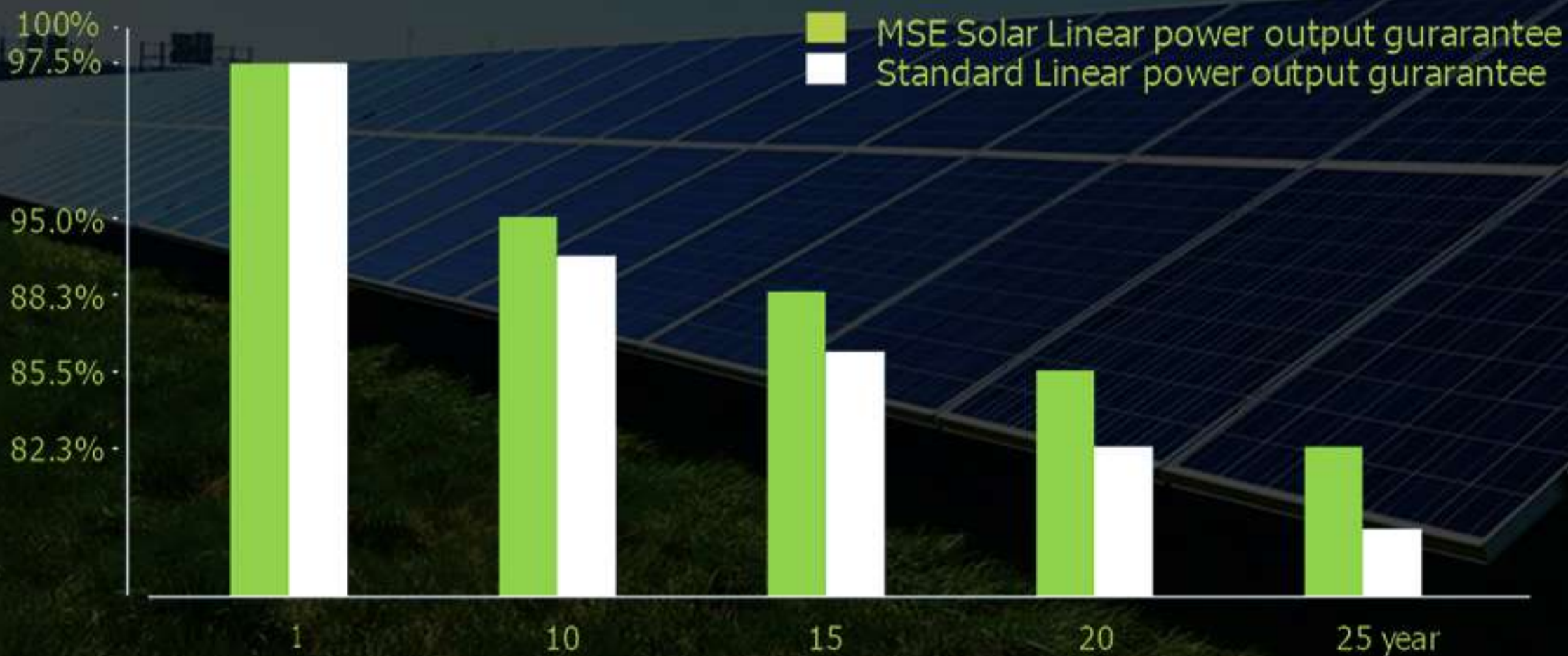
## Maximum Ratings

Operational Temp	-40 to +85°C
Max system Voltage	1500V DC (IEC)
Max Series Fuse Rating	20A
Mechanical Load	5400pa



## Performance Warranty

Max power degradation	0.5%/year
	97.5% at the end of first year
	95.0% at the end of 10th year
	85.5% at the end of 25th year



Made in Australia  
**20.76%**  
 Max Module Eff.

## Contact Us



1800 336 786 / +61 286073354



[www.msquareenergy.com.au](http://www.msquareenergy.com.au)



[support@msquareenergy.com.au](mailto:support@msquareenergy.com.au)



96-100 Toongabbie Rd  
Girraween NSW Australia 2145

/msquareenergy01

